

Last Updated: 14 April 2020

Reporting student attendance related to Coronavirus (COVID-19) for STATS 2020

Student in COVID-19 isolation

To report a student affected by the COVID-19 isolation period, the Australian Curriculum, Assessment and Reporting Authority (ACARA) has advised:

1. Where the student *did not attend lessons either, physically at the school or remotely on a school day*, they should be counted as absent. That is, count the student as absent as you would with any other illness (For example Category D: Medical absence – approved/notified absences due to medical reasons).
2. Where facilities/options have been specifically created that will allow the student to *remotely attend/undertake lessons on a school day*, the student may be counted as attending school if there is reasonable evidence¹ of participation remotely.

COVID-19 school/location/cohort of students attending remotely (from home)

Where:

- a. the school/location is open for teaching (i.e. technically it is a school day) *and*
- b. students have been asked by the school not to physically attend school if possible² *and*
- c. the school has provided an opportunity for students to participate in school remotely

the student should be counted as present on that day if there is reasonable evidence¹ of participation remotely and absent if there is no reasonable evidence.

COVID-19 schools/location temporary shut down

Where the *school/location* has been temporarily shut down (i.e. no lessons will be conducted in any format) due to COVID-19, count those closed days as [non-school days](#).³

COVID-19 cohort not to attend school and not attending remotely

Where *a specific cohort of students* (for example, all Year 10 students) at a location are required to stay home due to COVID-19 *and* no lessons will be conducted in any format for that cohort on that day, this should be treated as a [non-school day](#) *only for that cohort of students* not attending. (i.e. the school is not open for teaching purposes for that cohort of students on that day).

For a visual representation on determining a student attendance being present, absent or excluded see Figure 1 on page 2.

For more information about COVID-19, please visit the [Department of Health](#)'s dedicated Coronavirus page.

¹ Reasonable evidence can consist of many forms including a return of schoolwork in either paper or online form, participation in an online classroom or the teacher doing a roll call in another form of virtual way.

² Students who attend school because they cannot be supervised for remote participation are to be counted as present.

³ Schools offering supervision only whilst temporarily closed can mark those students supervised as present for internal records only.

Last Updated: 14 April 2020

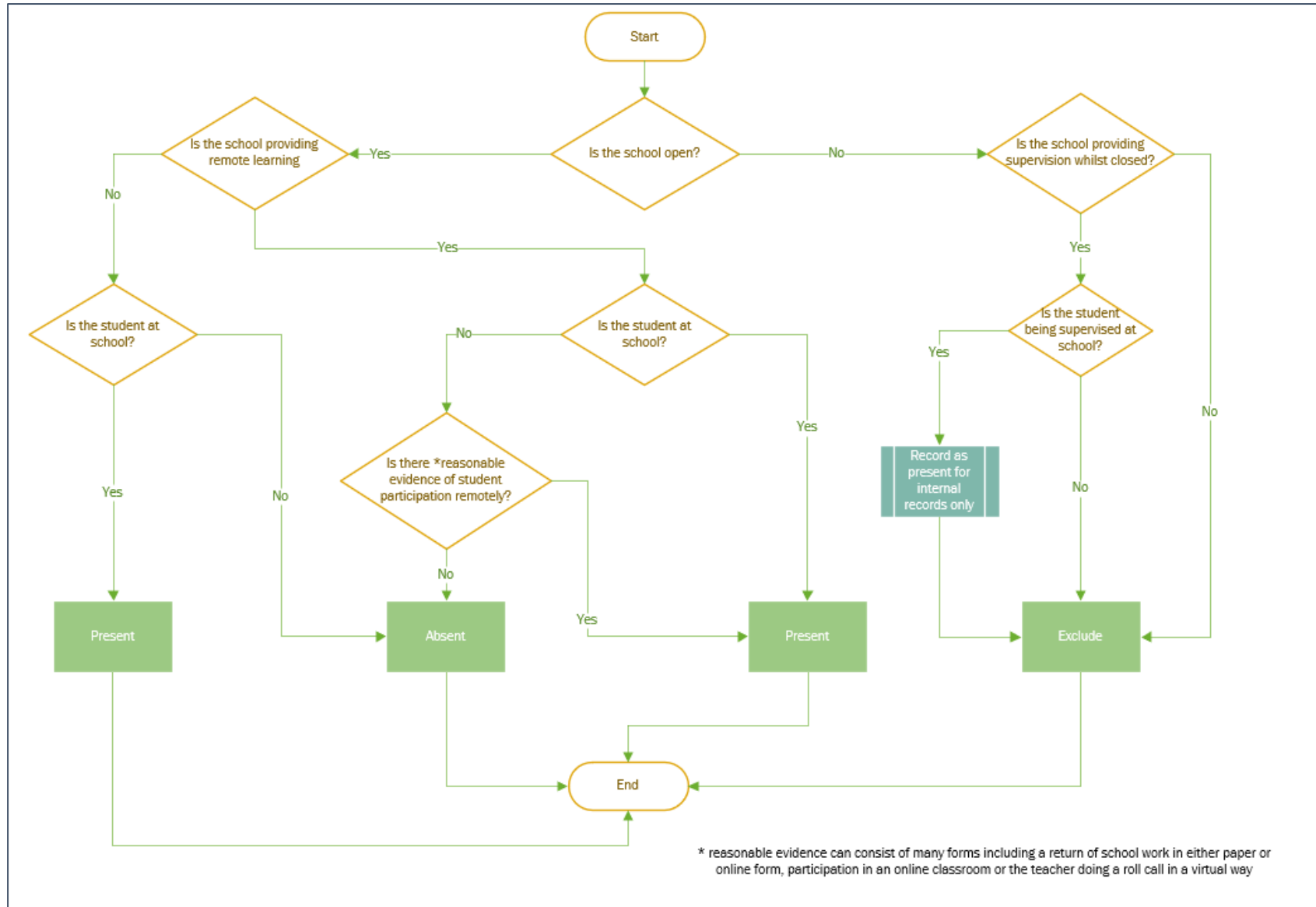


Figure 1: Decision tree for recording student attendance during COVID-19 pandemic